



GARDEN DESIGN WEEKEND WORKSHOP

Danilo Maffei, APLD

Saturday & Sunday, February 2 & 3rd, 2019
11 am – 3:30 pm

Dear Students:

Please bring the following items to the first session:

Garden Site Layout:

- Simple sketch with general dimensions of your own project site on 8 ½" x 11" paper. See sample document – page 2. Overall site should not exceed 80' x 60'. Use a tape measure, measuring wheel, or other tool.
- Aerial photograph of the site, printed in color on 8 ½" x 11" paper from one the following free online sources (or similar source of your own finding). Be sure to select "satellite view" or other similar setting to show images of the ground surface. Aerial photographs taken in winter are best, without tree foliage: ChescoViews <https://arcweb.chesco.org/cv3/>, New Castle County Parcel Search <http://www3.nccde.org/parcel/search/>, Google Maps <https://www.google.com/maps>, Bing Maps <https://www.bing.com/maps>

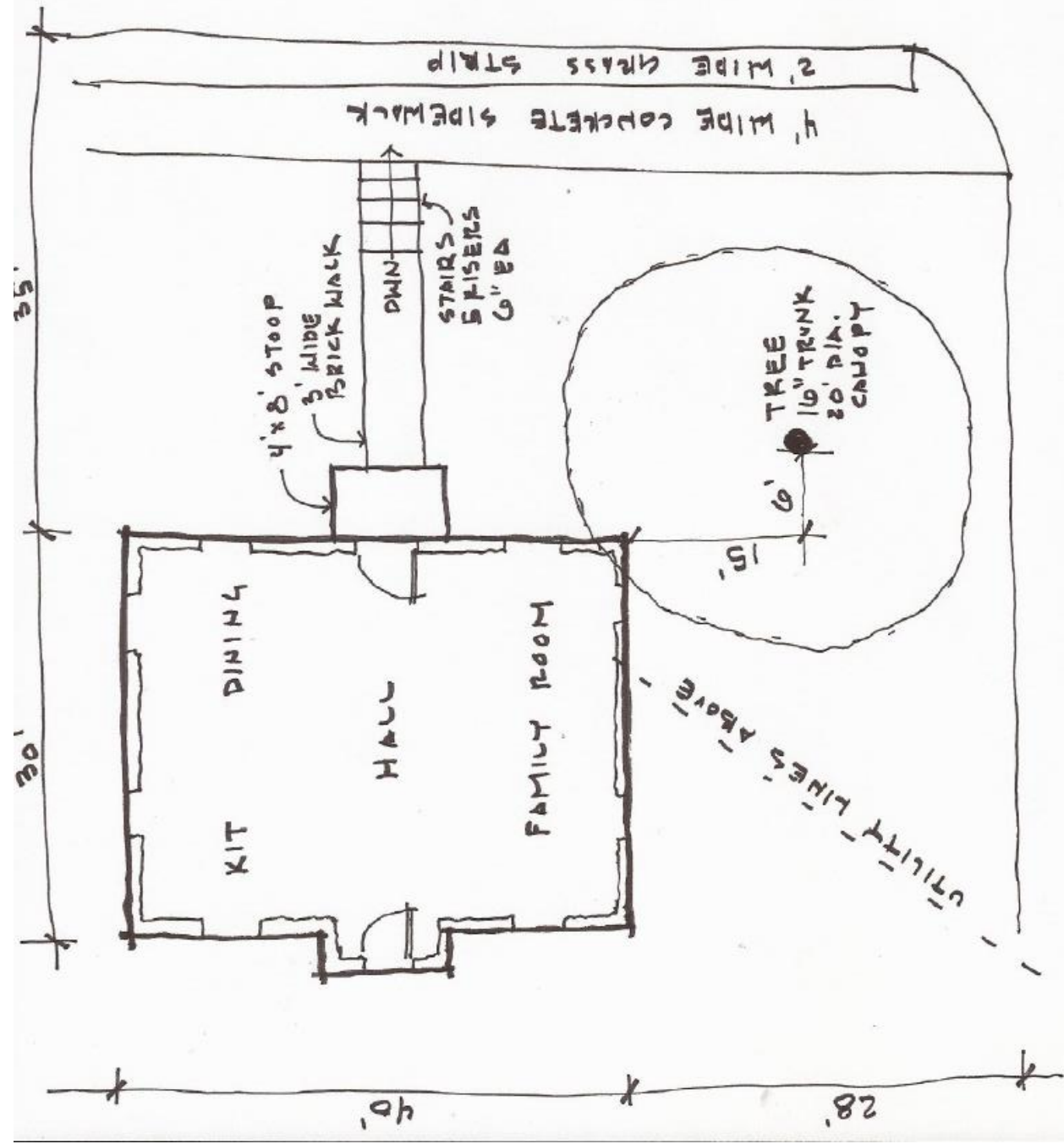
Supplies:

1. Pencil: 0.5mm mechanical **OR** #2 wood pencil
2. Pen: Papermate Flair M black **OR** other medium to fine point felt tip black pen
3. Calculator (basic functions, one on your phone is fine)
4. Drafting tape (Alvin) **OR** drafting dots (Alvin) **OR** masking tape
5. 12" roll tracing paper, white
6. Simple 12" ruler **OR** 12" rolling ruler (Alvin)
7. Circle template: large circles from approximately 1/16" to 3" diameter
8. *Colored pencils (optional)*

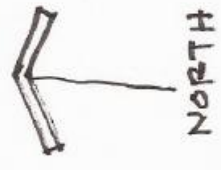
A *Local* source for these supplies is:

Kennett Copy & More,
739 W. Cypress St,
Kennett Square, PA.
484-732-8066

An *Online* source: www.dickblick.com



BROAD AVE.



SAMPLE PROJECT SITE

MAIN STREET